

# Low Pressure Water Mist System ETEA MIST LP up to HHS risks

**ETEA MIST LP system has been successfully tested according to CEN/TS 14972 (2011)**

## Low Pressure Water Mist working principle

Very small water droplets (only a few microns) make it possible to extinguish fires by means of three main principles:

- **quick water evaporation** in order to accelerate fuel cooling down,
- **partial replacement of oxygen with water** in order to suppress fire,
- **environment saturation** in order to contain the heat radiation of flames.

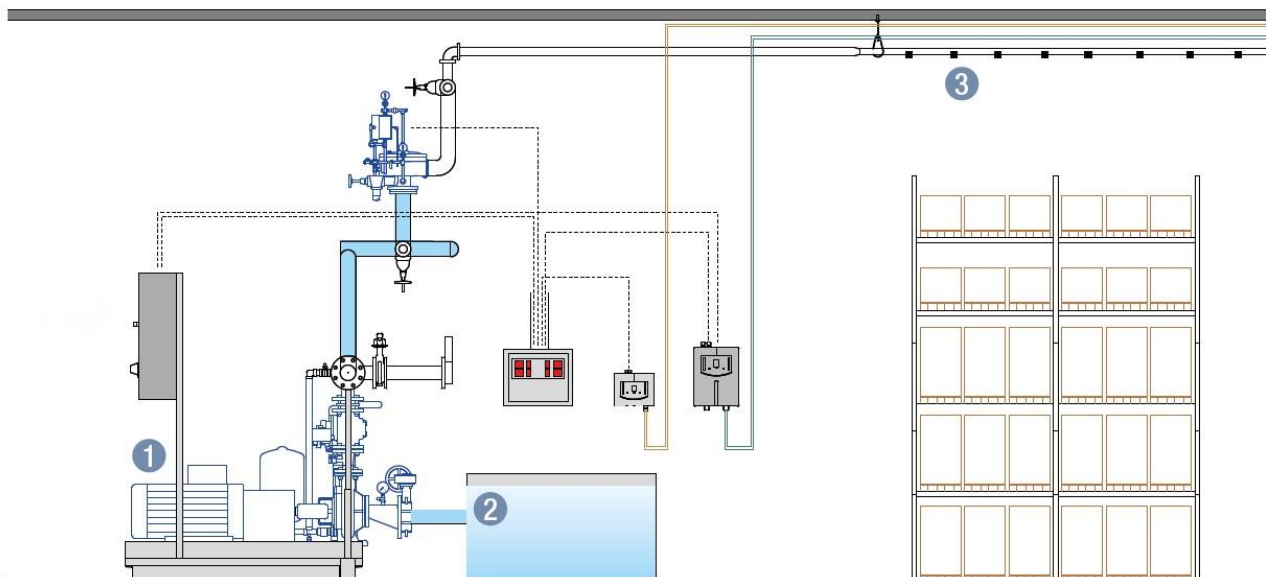


Effect of low pressure water mist

## Low Pressure Water Mist advantages

- pressure between 3,5 and 6 bar,
- lower water consumption, smaller water tanks, smaller piping and smaller pump stations than traditional sprinkler systems,
- much cheaper than high pressure water mist,
- high extinguishing efficiency due to very small droplets,
- possibility to connect the system directly to Fire Brigades water net.

## ETEA MIST LP SYSTEM DRY PIPE WITH FAST DETECTION



1. ETEA Pump LP;
2. ETEA MIST LP Water tank: **up to 70% less water consumption** if compared to traditional sprinkler system;
3. **Possibility to install the nozzles at 8 m height in intensive storages:** deluge system.



# ETEA MIST LP DELUGE SYSTEM – TESTED WITH SECURITON ADW & ASD

<b>ASPIRATION SMOKE DETECTION SYSTEM SECURITON ASD 535</b>	<b>1</b>	Pre-alarm
<b>LINEAR HEAT DETECTION SYSTEM SECURITON ADW 535</b>	<b>2</b>	Alarm
<b>ACTIVATION CONTROL UNIT SECURITON SFP 512</b>	<b>3</b>	Activation of extinguishing system
<b>ALARM VALVE</b>	<b>4</b>	Alarm
<b>LOW PRESSURE WATER MIST NOZZLES</b>	<b>5</b>	Water supply
<b>PIPING NET</b>	<b>6</b>	
<b>PUMP STATION</b>	<b>7</b>	

- Smoke detection with Securiton Aspiration system ASD 535
- Heat detection with Securiton linear heat detection system ADW 535



- Fire alarm activation
- ETEA D-Valve activation



- Water mist exit through open nozzles



- Non-corrosive pressfitting piping or welded PN16 piping



- Pump station

Solenoid valve activation by smoke / heat detection system



## FIRE HAZARD CLASS

Classification according to EN12845.

- Light hazard (LH) – Some areas of Schools and Offices;
- Ordinary Hazard (OH1) – Hospitals, Restaurants, Hotels, Offices;
- Ordinary Hazard (OH2) – Museums, Garages, Mechanical Industries;
- Ordinary Hazard (OH3) – Industries, Shopping Centres, Paper Archives;
- Ordinary Hazard (OH4) and High Hazard (HHS) – Intensive Warehouses, Logistic Centres.

